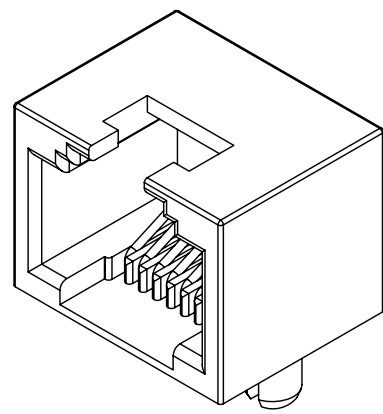


REV. 版本	ECN NO. 变更说明	DATE 日期
01~04	新增料号	14.05.05
05	更新图纸与实物相符	14.12.18
06	新增料号	15.01.05

SPECIFICATION NOTES:

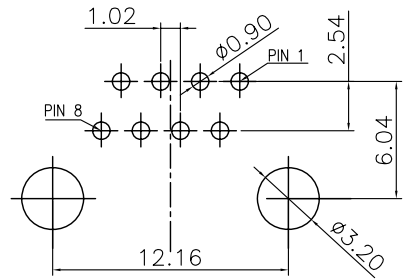
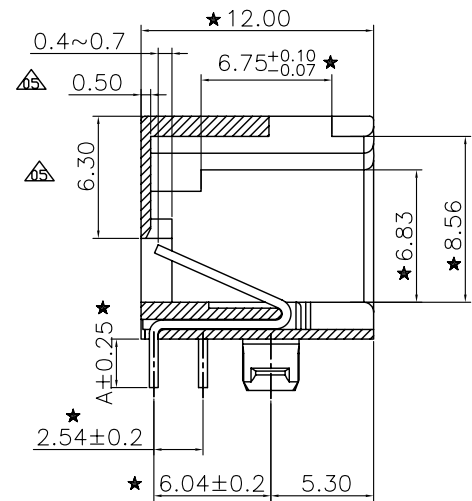
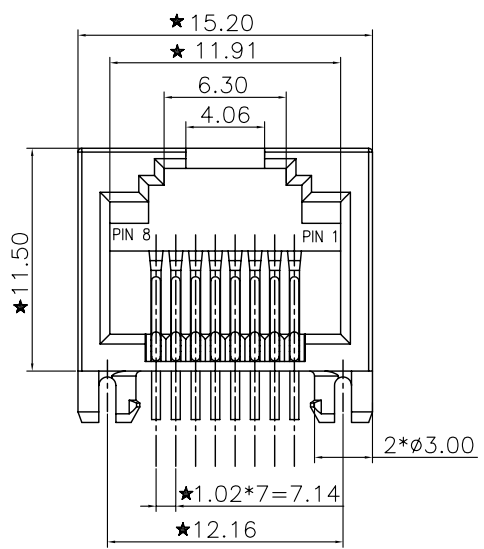
- ELECTRICAL:**
- VOLTAGE RATING: 125 VAC RMS
 - CURRENT RATING: 1.5 AMP
 - CONTACT RESISTANCE: 20mΩ MAX.
 - INSULATION RESISTANCE: 1000MΩ MIN. AT 500V DC.
 - DIELECTRIC STRENGTH: 1000 V AC OR 1500V DC RMS AT 0.5mA 50 Hz / 60 Hz FOR 1 MINUTE
- MECHANICAL:**
- HOUSING&INSERT&MATERIAL: SEE TABLE
 - CONTACT MATERIAL: DIA. PHOSPHOR BRONZE $\phi=0.46\text{MM}$
 - PLATING: GOLD PLATING AT CONTACT AREA, NICKEL SEE THE DESCRIPTION. OVER ALL
 - OPERATING LIFE: 750 CYCLES MIN.
 - MATING/UNMATING FORCE: 30N/3.06KG MAX.
 - RETENTION STRENGTH: 30N MIN. FOR 60S $\pm 5\text{S}$
- ENVIRONMENTAL:**
- STORAGE: -40°C TO $+85^{\circ}\text{C}$ RELATIVE HUMIDITY $< 80\%$
 - GUARANTEE PERIOD: 12 MONTHS
 - OPERATION: -40°C TO $+85^{\circ}\text{C}$
 - WAVE SOLDERING TEMPERATURE: $260 \pm 5^{\circ}\text{C}$ 5~10 SECONDS. MATES WITH MODULAR PLUG CONFORMING TO FCC PART 68, SUBPART F.



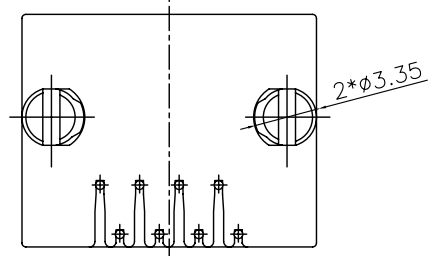
- 环境特性**
- 储存温度: $-40^{\circ}\text{C} \sim +85^{\circ}\text{C}$
相对湿度 $< 80\%$
 - 储存时间: 12个月
 - 工作温度: $-40^{\circ}\text{C} \sim +85^{\circ}\text{C}$
 - 波峰焊温度: $260 \pm 5^{\circ}\text{C}$ 5~10S
 - 带* "尺寸为重点管控尺寸"

- 电气特性**
- 额定电压: 125 VAC RMS
 - 额定电流: 1.5 AMP
 - 接触电阻: 20 mΩ MAX
 - 绝缘电阻: 1000 MΩ MIN. @500 VDC
 - 耐压强度: 1000 V AC 或 1500V DC RMS @ 0.5mA 50 Hz 或 60 Hz 一分钟

- 机构特性:**
- 塑壳材质: 见表格
 - 圆针材质: 磷青铜, $\phi=0.46\text{MM}$
 - 圆针电镀: 全区镀镍底见描述规格, 后依订单决定镀金厚度, 如表说明
 - 可靠性: 最少750次插拔
 - 插入/拔出力: 30N/3.06KG MAX.
 - 配合强度: 30N 60S $\pm 5\text{S}$.

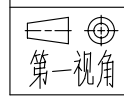


PCB LAYOUT T=1.6mm
TOLERANCES: ± 0.05



RoHS COMPLIANT

Coorle 库乐科技		TEL: 0769-81585156 FAX: 0769-81605156		TOLERANCES 公差 0~15 ± 0.15 15~30 ± 0.20 30~50 ± 0.25 50~ ± 0.30 ANGLES: $\pm 1^{\circ}$		Material: 材质		Designed: 设计		欧庆潮		NAME: 名称		单胞 MINI 8P8C 插座	
Finish: 电镀		CUSTOMER: 客户		MODEL NO: 料号		SHEET		Checked: 审核		Approved: 核准		DWG NO. 图号		REV. 版本	
OF		第 页		共 页		PART NO. 料号									



A4
SIZE

SCALE
比例
1:1

UNIT
单位
mm

CUSTOMER:
客户

N/A

MODEL NO:
料号

N/A

SHEET

OF

第 页

共 页

PART NO.
料号